

# Arc Weld Studs - Internally Threaded

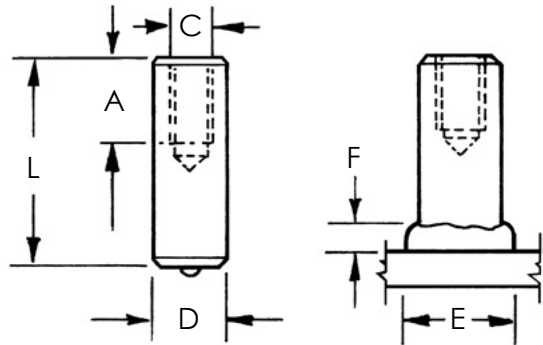
## AIN-FB - TAPPED INTERNALLY THREADED FULL BASE - ARC WELD STUD

Tapped Internally Threaded Full Base weld studs are available in mild steel and stainless steel materials. As the majority of these studs are made to each customer's order, the customer can specify all dimensions.

Coarse and fine threads are available in both imperial (UNC-2B and UNF-2B) and ISO metric (Class 6g) sizes. The imperial coarse threads are depicted below (UNC-2B).

Tapped Internally Threaded studs are used to secure components to larger structures and or as a standoff.

For application, dimensional and in stock assistance, please contact Sunbelt Stud Welding.



Stud Specifications						Standard Accessories			
Base Diameter	Max. Thread Tap	Max Std. Thread Depth	Minimum Length*	Flash Dimensions		Ferrule	Foot	Grip	Chuck
D	C	A	L	E	F	P/N	P/N	P/N	P/N
0.250	#8	0.250	0.500	0.359	0.109	F025-F	B-1N	GN-025	CN-025
0.312	#10	0.281	0.577	0.438	0.109	F031-F	B-1N	GN-031	CN-031
0.375	1/4 - 20	0.375	0.718	0.500	0.125	F037-F	B-1N	GN-037	CN-037
0.438	5/16 - 18	0.468	0.858	0.578	0.141	F043-F	B-1N	GN-043	CN-043
0.500	3/8 - 16	0.562	0.983	0.688	0.156	F050-F	B-1N	GN-050	CN-050
0.625	1/2 - 13	0.750	1.287	0.797	0.188	F062-F	B-2N	GN-062	CN-062
0.750	5/8 - 11	0.937	1.593	0.938	0.250	F075-F	B-2N	GN-075	CN-075
0.875	3/4 - 10	1.125	1.859	1.094	0.313	F087-F	B-3N	GN-087	CN-087
1.000	7/8-9	1.312	2.125	1.250	0.375	F100-F	B-3N	GN-100	CN-100

Note, the minimum length (L) is reduced when smaller thread sizes are used compared to what is shown.

To order or specify give: Stud Code, Dimensions D x L, C x A, Material and Quantity

Example: AIN-FB, .50 x 1, with 3/8-16 x .562, (BW), Mild Steel, 1000 pcs.

Specify (L) Length on a Before Weld basis by indicating "BW"

or on an After Weld basis by indicating "AW."

See **Accessories** for accessory detail and **Ferrule Specifications** for ferrule options.

See **Arc Stud Welding - General Information** and **Technical Details** for industry specifications, thread options, Before Weld (BW) length, flux, raw material details, plating options, annealing, load strengths and shipping weights.

